



QUAREIA—THE ADEPT

Module VIII—Mediation of Power

Lesson 5: The Wheels

BY JOSEPHINE MCCARTHY

WELCOME

Welcome to this lesson of the Quareia curriculum.

The Quareia takes a magical apprentice from the beginning of magic to the level of adeptship and beyond. The course has no superfluous text; there is no dressing, no padding—everything is in its place and everything within the course has a good reason to be there.

For more information and all course modules please visit

www.quareia.com

So remember—in order for this course to work, it is wise to work with the lessons in sequence. If you don't, it won't work.

Yours,

Josephine McCarthy



QUAREIA—THE ADEPT

Module VIII—Mediation of Power

Lesson 5: The Wheels

This lesson will give you a rest from magical action and visionary work; instead you can do some reading, looking, researching, and pondering. It will give you deep insights into parts of your practice and move your understanding on a step further. In this lesson we will look at the Wheels: angelic dynamic structures inherent within everything, and that govern the tides of life, death, and mystical experience.

Understanding the Wheels is a major part of magical adept learning, as it adds to the deeper understanding of how angelic consciousness operates outside of their more human-like presentation. It should also give you a deeper understanding of how the overall pattern of creation and destruction works, as well as opening out the realisation that everything in creation is mirrored within everything else.

This helps the adept understand flows of power at a fundamental level, an understanding that can then inform and expand the work of power mediation, of when to mediate and, more importantly, when not to.

What are the Wheels?

In Western terms, the Wheels are angelic: they are a consciousness with a specific purpose and do not operate outside of that purpose. In some

other cultures they are assigned a different identification in terms of their root power: remember, 'angel' is just a human word we use to describe forces that affect everything in creation and destruction.

The Wheels are a layer of angelic consciousness inherent within every manifest substance from a planetary level to the microbe level, but they are not a type of consciousness you can hold a conversation with. They are part of the deep 'mechanics' of manifestation that act as a metronome for Divine creation and destruction, keeping the balance and triggering the turns of fate as and when needed.

The Wheels regulate flows of power, and flows of creation and destruction. Their basic action is to keep things going or stop things flowing. They also act as triggers for bridges; they are not bridges themselves. Activating the Wheels within something can bring something into existence or trigger something to be taken out of circulation.

They are deeply connected to the Ladder, to the energy centres of the body, to the movement of the land, and the movement of the planet. They are also connected to the bridges of conception and death, and to the movement of consciousness from one realm to another. They are the nuts and bolts behind life, vision, birth, death, angelic visitation, the creation of something, and the destruction of something.

In some religious texts they are referred to as exalted beings not connected to the mundane. This is a mistake: they are in and connected to all substance. However they are far removed from the human conscious understanding of angelic beings. In religious texts, angels mostly tend to appear as human, which is to say that they are beings close to, and able to commune with, humanity. The Wheels, however, are not close to human consciousness; they are about the Divinity within substance and how that power moves and operates. The more you work as an adept in vision and ritual with these beings, the more you will come to understand their presentation and behaviour.

You have had some experiences of seeing them in vision, particularly with the Osiris work, and where life emerges from the depths back up for renewal. Before we go any further, let's look at some images and texts that relate to them from different religions and cultures. These deep powers appear in mystical visions in any system that connects to the deeper aspects of the earth and Divinity within substance, and as such they subsequently appear in myths, religious imagery, and mystical philosophy.

The first image shows the Wheels as part of the Divine 'chariot,' the

power that raises the mystic to the foot of God—inner and/or outer ascent. The Wheels are the ‘governors’ of the Ladder of ascent, and the angelic beings that create a structure are the Ladder or Chariot. The angels of the structure are known in Christian and Judaic texts as the ‘Four Creatures,’ or *Chayot*. They appear in the Book of Daniel, the Book of Ezekiel, The Book of Revelations, and in Merkabah texts. Here is a clip of the text from Ezekiel chapter one, that describes the relationship between the Four Creatures and the Wheels.

As I looked at the living creatures, I saw a wheel on the earth beside the living creatures, one for each of the four of them. As for the appearance of the wheels and their construction: their appearance was like the gleaming of beryl; and the four had the same form, their construction being something like a wheel within a wheel. When they moved, they moved in any of the four directions without veering as they moved. Their rims were tall and awesome, for the rims of all four were full of eyes all around. When the living creatures moved, the wheels moved beside them; and when the living creatures rose from the earth, the wheels rose. Wherever the spirit would go, they went, and the wheels rose along with them; for the spirit of the living creatures was in the wheels. When they moved, the others moved; when they stopped, the others stopped; and when they rose from the earth, the wheels rose along with them; for the spirit of the living creatures was in the wheels.

And here is the first image:

Here is a second image, also of the Wheels and a version of one of the ‘creatures.’ Note that the angel has been made more human. This is a thirteenth-century Christian image of the Ophanim. Note the eyes on the Wheels, which marks them out in visionary language as being angelic as opposed to anything else.

And here again we have the Wheels. This time the Ophanim are depicted with the heads of the Four Creatures. This is from a medieval manuscript.

Figure four is where we start to shift focus in our understanding of the Wheels. Remember, everything has two sides to it, two opposing functions, as everything in creation works in some form of polarity. What we shall look at and understand next was something buried in the text of the Arbatel: the flip side of the Four Creatures.



Figure 1: Engraved illustration of the “chariot vision” of the Biblical book of Ezekiel, chapter 1, after an earlier illustration by Matthaeus—Matthäus—Merian—1593-1650—for his “Icones Biblicae”—a.k.a. “Iconum Biblicarum”).



Figure 2: Thirteenth-century Ophanim

As the Wheels can facilitate an ‘up’ movement of power and angelic structure, so they can also facilitate a ‘down’ movement. The Four Creatures are depicted with wings, which is also the visual vocabulary for ‘up,’ and they bear the faces of four sacred creatures.

When the Four Creatures are involved in a ‘down’ aspect, they take on a more human appearance and have no wings. Instead they are depicted according to their method of facilitating ‘down,’ as Pestilence, War, Famine, and Death. They become the Four Horsemen, just as the angel of death is often depicted as a skeletal or rotting human with a weapon. In Revelations, the Four Horsemen are not posited as the flip side of the Four Creatures; rather they are presented as being *controlled and instructed* by the Four Creatures.



Figure 3: Medieval version

While these depictions change according to culture and artistic license, the underlying imagery has its roots in the visionary encounters of humans with these beings—and once you spot them in vision, you will never forget them.

The next image, by Albrecht Dürer, with whom you should be familiar by now, depicts the Four Horsemen. Though the Wheels are not depicted in the image, when you work in vision in a setting of death and destruction, you often see the deep Wheels in the earth turning in a ‘pulling-down’ action. Note what the horsemen are carrying.



Figure 4: Albrecht Dürer, *The Four Horsemen*

The next image is from a totally different culture and religious pattern, Buddhism, and is one of the Cakravarti. The image is of a mandala that depicts the Chakraratnaya or Great Wheel, one of the seven miracle treasures, a great wheel that spins in the sky.

The Cakravarti is a 'perfect ruler' who rules the great kingdoms of the earth. He travels the world and teaches all rulers how to rule with peace, and the power of the Great Wheel allows him to ascend into the lower heavens should he wish to. This mandala depicts the six Cakravartins,

or six perfect rulers. Do your research should you wish to look further into them, as they are pretty interesting.

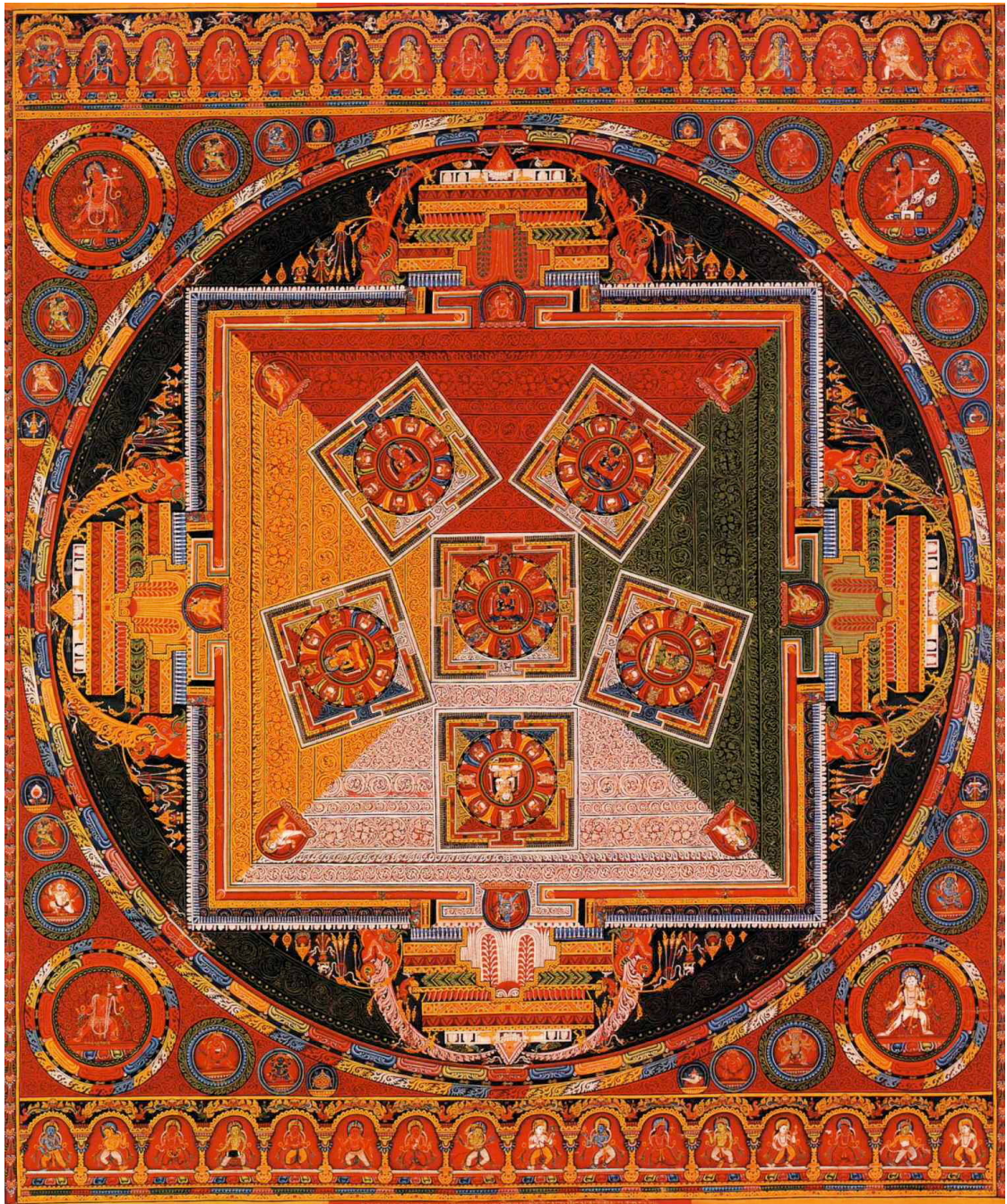


Figure 5: Mandala of the six Cakravartins

Next we will look at the Klacakra ‘Wheel of Life.’ Klacakra refers both to a patron Tantric deity of Vajrayana Buddhism and to the philosophies and meditation practices contained within the Klacakra Tantra. The dynamics of Klacakra revolve around cycles—Chakra—and time—Kla—the cycles of the planets, the cycles of life and death, and the cycles of the body. It works through the cycles of the body and the subtle energies that flow through the cycles—Chakras. By working with and understanding

them, the practitioner beings to understand that the cycles also operate in and with every manifest substance. The other English word used to translate “Chakra” is “wheel.”

The Chakra system understands the universe from the body outwards, whereas other systems often work from outside inwards, towards and within the body, in a spiral pattern of learning. Either way, one key understanding is the importance of the Wheels and how they are the upholders and triggers of manifestation, and of withdrawing from manifestation. You are part of the universe and the universe is part of you, or, as it is often put in Klacakra tantra, ‘as outside, so within the body.’

So maybe now you are beginning to understand why awareness of these Wheels is a major key for the adept in a whole layer of understanding.



Figure 6: Klacakra wheel of life

The following image takes us back far further and away from temple-based religion and more into tribal religious patterns. When we go back in time to the Neolithic age we start to see stone circles. They may or may not be connected to this dynamic as we know nothing about them or about the cultures that built them. They could have had religious or social connotations; we just don’t know. However, in early and pre-Western contact North America we once again come across the Wheels.

I have visited and worked with one of these Wheels. They are incredibly powerful, active, and still facilitate contact. Again, we do not

know when they were built or what they were used for, and though many theories proliferate, in the end they are just theories. But I thought it pertinent to show you one of these Wheels. This one is in Wyoming, and is situated at the top of Medicine Mountain in the Bighorn Mountains. It stands at 9,420 feet and when I visited it in the middle of summer it was snowing. I had one of my most profound experiences there, and it was totally unexpected. It gave me a great deal of respect for those who built it and the deep, lasting power gathered together in that place. No one knows how old it is, but there is evidence of activity there for at least seven thousand years.



Figure 7: Medicine wheel Wyoming

The last image comes from Tibetan medicine texts, and illustrates the five chakras—Wheels—which house the ‘root winds.’ The five chakras are said to cause, govern, and sustain the five emotions and psychic energies. In this system the wind is the vehicle of the mind and enables the mind to think and experience. It gives energy to the body and essentially helps the body to function in all its aspects. Everything physical, mental, and psychic depends on the wind humor. It transports the consciousness, triggers awareness, and powers the mind.

Now think about those actions in the body in light of what we know of the Wheels in the earth, the realms, and the universe. Think about the mystical connection between the wind, breath, and the wind humor. It is essentially the same dynamic in the body as in the land and manifest world. Take this a step further esoterically, and you become aware that working and tending the Wheels in the body also affects the Wheels outside the body, out in the world, and vice versa. Tinker with one and you tinker with them all; become respectful of one, you become respectful of all. One triggers the other, the Wheels turn in the earth, and the Wheels within your body respond—the action of life and death.

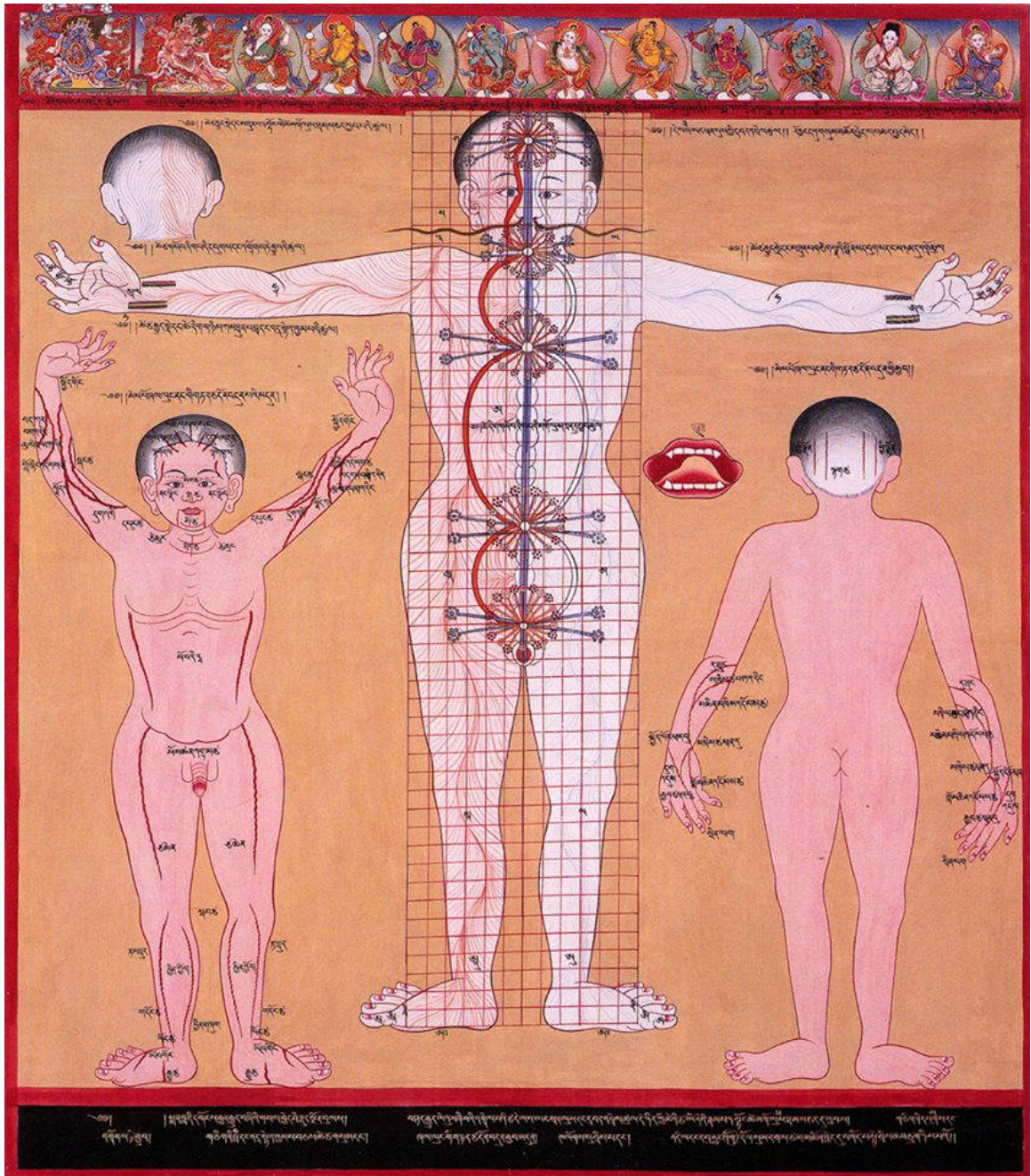


Figure 8: Tibetan medicine chakras

There is a lot of deep esoteric knowledge in there for you to ponder on and explore...carefully.

So how do we put all this together?

Once you understand the Wheels as being major components in the mechanics of life and death, then when you spot them you can observe them to understand the wider picture of what is happening.

Remember, the Wheels within the body resonate with the Wheels

within the land: they are part of the mechanism of the vessel as an active principle, and of the vessel as a vehicle. All layers of the Wheels, regardless of what they are in/attached to, all resonate with each other. Triggering one layer of the Wheel can trigger another, hence the Arbatel's 'suicide by angel.' Triggering the Wheels within the land in ritual and vision also triggers the Wheels within the body...you can work out the rest yourself.

Once you understand the connection between the Wheels of the body and the Wheels of the land, you can work in healing vision to help the Wheels of your body resonate in harmony with the metronome action of the Wheels within the land to stabilise the body. You can also do the reverse, working with the Wheels in the body to stabilise the land. You are intimately connected at a deep level with the land, and land and body can harmonise together for the good of both.

This harmony taps into the metronome aspect of the Wheels, or their fulcrum. When they turn in a constant rhythm it keeps the equilibrium ticking along, and you and the land tune in together. When you become deeply tuned into this connection and there is a disturbance within the land, you will feel it in your body. If the disturbance is strong enough, i.e. a major event is about to unfold and the Wheels have changed gear, then you will feel it strongly. Some people have a major bodily reaction to this: a body precognition.

The major events that can cause this tend to be either mass death or the death of an individual who was a major, key player in the larger pattern. Other things may also be triggered by the turning of the vast Wheels in the land, but I have only seen in vision such events connected to the deaths of a lot of people in one short time.

When they trigger in the land near you—and don't forget this is a natural process—you will feel it within your body. One or more of *your* Wheels may shift from their regular, collective rhythm to a rhythm out of step with the others. This can be a danger to you. When the Wheels trigger in the land, any nearby living thing ripe for destruction will be drawn near or into death. When someone is very ill or has a hidden, unknown condition that threatens them, the land's Wheels can make the individual's Wheels knock out of alignment. This movement away from their fulcrum can bring a health crisis or death.

An adept who feels such a shift within their bodily Wheels can immediately put their mind to their own inner Wheels and work in vision to bring them back into focus, assuming their body is healthy enough to continue. At other times the force of the land's shift can trigger a distur-

bance within even a healthy adept's body, and the inner power of the shift can cause their Wheels temporarily to adopt an unbalanced rhythm. This is often felt in the thyroid. Remember what we have said about the thyroid being vulnerable to magical energy? This is all connected.

The wheel in the throat area can start to feel disturbed or out of sync. This may begin to manifest physically as a throat ache, a change in their voice, and often a change in their body's energy. While such changes are mostly too subtle to be picked up in medical tests, in a sensitive adept they can throw them off-balance.

Luckily there is a simple remedy: kelp. When the Wheels' triggering affects me, I work on my Wheels to get them all lined up again to the right speed, then take kelp.

This brings up another major difference between an ordinary person and an adept. Though an ordinary person also has these things happening around them all the time, they are just not aware of it, and do not understand why they are thrown off-balance sometimes. An adept should recognise the cause, sort their body out, then keep a watchful eye on the events and energies around them. Survival and evolution is about paying attention.

We can often observe these Wheels turning in the land to draw in life or take life out when there is a big event. The outer manifestation, from an inner sense, are the 'hotspots' in the land where pressure builds up then releases through a major accident, natural disaster, or an inrush of a death tide. The Wheels are the deep 'behind-the-scenes' aspect of such events.

As deep-seated mechanisms, the Wheels are also involved in the process of powerful mystical vision, and ascent and descent. Once certain levels of power and contact are established in the adept, then occasionally they will experience very profound or powerful visions that transport them to the thresholds of creation and destruction, and this will trigger their Wheels into a different octave.

Such experiences do not take out the life; rather they transport the spirit temporarily—or sometimes permanently—to these deep thresholds. This dynamic is known in Kabbalah, Christian mysticism, and in some branches of Buddhist mysticism. The body and its Wheels mirror the earth and its Wheels. The body is the vehicle, the chariot. The spirit is the rider, and the body's Wheels are the wheels that transport it. The spirit is permanently or temporarily ascended or descended. If it is permanent, then death of the body occurs; if it is temporary, then the person has a

deep mystical experience where their spirit ‘lifted above.’

This is part of the Merkabah Mysteries, and is the dynamic of ‘climbing the Ladder in life.’ How that ladder appears largely depends on a person’s spiritual and cultural vocabulary. Also note that the Ladder is the same thing as the Chariot and the ‘hands of angels’ that act as a ladder. They all describe an angelic collective structure that moves your spirit/consciousness from A to B.

So you begin to see many complex layers to the Wheels. They operate in the collective mechanism of life and death, of shifting around for the health of the land, and those actions are mirrored in the body. The adept puts the two together: the pattern of the land and the pattern of the body are lightly tuned and ‘realised’ to move with the Wheels while still in life.

The Wheels open the ladder up or the ladder down. A nice description of the up/down flow can be found in Plato’s *Republic* as the Vision of Ayr the Armenian, which you should already have read. The section that describes the flow of souls above and below is an outer presentation of the mechanism that the Wheels are part of.

The elements play a powerful role in the overall mechanism of the Wheels and the Vessel, Ladder, or Chariot. Understanding this can not only give you insight into visionary encounters with these powers, but also into some of the visual vocabulary used when these powers are depicted in very old paintings and inscriptions.

The element of the Wheels is fire. They often present as fiery wheels with many eyes and wings—i.e., this is an angel. If you get out the Quareia Magician’s Deck and look at the Wheel of Fate, you might now have a better understanding of its deepest meaning: the angelic Wheels that turn and thus affect the fate of something. Think about it: if something you are observing is affected by the triggering of the Wheels into action, then a major change of creation or destruction is coming.

The other element associated with the Wheels is air. At the deepest level, this air is the Divine utterance that triggers and directs the Wheels into action, the Breath of Life. Air is the major component that creates, instructs, and utters through all angelic beings and structures. Thus for an angel close to humanity, the air becomes annunciation, or sound that brings life or takes it away. For more abstract angelic structures like the wheel it is the air that vibrates, that creates sound, or that brings storms, all which are the powers that jump to life when the Wheels are triggered into action.

In some visionary texts that describe the Wheels, or where the Wheels are present, there is also descriptions of fire, and of a 'great wind,' roaring sound, or the sound of trumpets. These are the voices of the Wheels.

At a more subtle level, the air element is the lifeblood of the Wheels, just as it is for us: it gives them life. Think back to the air humors.

This is a lot to take in and digest, even though it is a short and simple lesson. Spend some time researching the various aspects of the Wheels brought up in this lesson. Look at the Buddhist texts connected to them; at Judaic texts like *Ezekiel*, the *Book of Daniel*, and *Revelations*; and at early paintings and depictions of the Wheels and the four creatures.

Cross-reference this with what you learned and looked at to do with the Ladder, which is part of the whole picture of this angelic construct. And go back over parts of the Arbatel in light of what you have learned in this lesson, as another layer of that text may now surface for you.

Look carefully at religious and mystical images depicting the Creatures and the Wheels. Which ones have the creatures and Wheels separate, which ones have them together, and which ones have an angelic being standing on the Wheels? They all depict different aspects of the construct, and how it works in different ways. Also look further into other cultures and religions and see if you can dig up references to the same concept coming from a different point of view.

Write up all your notes and conclusions, and do some readings to see how putting up a depiction of Wheels, or more than one depiction, on a wall in your home could affect your home and you.

As an irreverent ending to this lesson, would it not be cool to have a car whose four hubcaps had a bull's head on one, an eagle on one, a lion on one, and a human face on the last? I am sure many inner eyes are rolling at this, but it is one of those things that puts a wicked smile on my face...

QUAREIA

COPYRIGHT

© Josephine McCarthy 2016

All rights reserved. No part of this publication may be reproduced, distributed, or transmitted in any form or by any means, including photocopying, recording, or other electronic or mechanical methods, without the prior written permission of the publisher.