



---

## QUAREIA—THE INITIATE

Module IV—Birth, Death, and the  
Underworld, Part II

Lesson 2: Breaking the Web

---

BY JOSEPHINE MCCARTHY

# WELCOME

*Welcome to this lesson of the Quareia curriculum.*

*The Quareia takes a magical apprentice from the beginning of magic to the level of adeptship and beyond. The course has no superfluous text; there is no dressing, no padding—everything is in its place and everything within the course has a good reason to be there.*

*For more information and all course modules please visit*

[www.quareia.com](http://www.quareia.com)

*So remember—in order for this course to work, it is wise to work with the lessons in sequence. If you don't, it won't work.*

*Yours,*

*Josephine McCarthy*



---

## QUAREIA—THE INITIATE

### Module IV—Birth, Death, and the Underworld, Part II

#### Lesson 2: Breaking the Web

---

When a person comes to the end of their life measure there is something that can be observed from an inner magical perspective, and that is the breaking of their web and the release of their vital force: the point of death.

Remember your fate web? There is a similar pattern in the layers of your energetic body. When you delve deeply into the human body in vision, once you get past the inner expression of the human form, past the layers of organ spirits and the flow of the vital force, then you come to an intricate pattern: the *web of your body*. It is the pattern that anchors your spirit to your body and melds the two together. If this pattern breaks apart or becomes badly damaged, the body and soul can no longer join together.

It is very clear to see when approached in vision, which makes me wonder whether the sight of this web in dreams and visions is why the ancients called the creation goddesses ‘weavers.’ When there is magical or energetic damage to a body, it is at this level, the pattern, that the repairs are made: no amount of healing will help if the pattern is torn.

Slight tears and minor damage in the weave can be fixed. These often come from severe trauma, hot spots in the fate weave, and so forth.

When there is a tear in the weave, it means that whatever harmed the person's body was strong enough to reach the weave, the deepest part of someone's physical existence and the most protected, most vital part of their being.

But when the measure of life comes to an end<sup>1</sup> then the web pattern starts to break up of its own accord: the threads are cut. No amount of inner work, healing, or weaving will keep someone alive once their measure comes to an end.

---

### *The pattern within the pattern within the pattern*

---

Everything around you, including your body, is built of energetic web patterns which interweave and roll apart in a constant motion of union and separation. When you begin to look deeply in vision it becomes very difficult to comprehend this constant weaving, moving pattern that is the whole of creation. The narrower you make your focus the more you see—and the more complex the whole thing becomes.

Each strand of your own web is made up of many tiny interwoven patterns. Each of those patterns is made up of yet more weave, and each aspect of the weave has an energetic polarity that keeps it powered up.

When a person is coming to the end of their *thread*, regardless of their age, it can often be felt by some visionary magicians and psychics who come into contact with them: the person feels powered down at a very deep level. The threads are beginning to self-destruct and the first thing that happens before they crumble and break is that their energy polarity ceases. There is no tension between the strands. No energy travels along each strand to keep it energised, and the thread finally collapses. Once this has happened the outer physical body no longer has a proper inner power source, which in turn leads to the outer organs beginning to fail.

Why do you need to know this? As a magician you will find yourself, over time, in all sorts of odd situations, and needing to work on various people to heal them, keep them alive, or release them into death. In such situations knowing how the web pattern within the vital body works and what to do with it will come in very useful.

---

<sup>1</sup>Morta.

Also, nature is very efficient: the whole of creation is made up of the same systems and patterns, so if you understand the energetic web of a human, you then also understand the energetic pattern of a tree, a mountain, a cat... There are only small variations in the energetic web of a cat and a human, or a tree and a human. If you can work on one, you can work on them all.

And once you have understood the concept and worked in vision on your own web and the webs of different things, you will begin to learn about energetic weaving in terms of magic and creation. Everything operates within these patterns, including magic. It adds another layer of understanding and skill to your magical toolbox.

---

### *Layers of the pattern*

---

People working with visionary magic and spirituality in the nineteenth century wrote quite a lot about the different layers of the human body.<sup>2</sup> When I started delving into the body as a young visionary magician I did indeed find that it had many layers, but they were not neatly separated and labelled; rather they seemed to form a complex set of interlocking patterns that were constantly shifting and communicating back and forth with each other.

As magicians we separate these layers out in our minds so we can work directly on a problem, but it is important not to fall into dogmatic thinking—seven neat and tidy layers—as this will limit your experience and understanding.

This dynamic of layers in a pattern is inherent in all patterns of creation and destruction. Learning to recognise the shifting, changing layers and to work with them in a focused way allows the magician to act as a catalyst for change in anything they are working on.

Once the dynamic of destruction is triggered in anything—a body, a magical pattern, a land area—the inherent web begins to break apart. This lets the power of destruction into the pattern to dismantle it. The same holds true for bodies. When a point of death draws near, the pattern itself starts to fall apart. This triggers a loss of vital force and the integrity of the overall substance of the body.

---

<sup>2</sup>The seven layers, i.e. the astral, etc.

If this process is a slow decline, often the organ spirits will at first fall quiet and not communicate. Then they will slowly withdraw their consciousness from the organ pattern. This triggers a decline in the physical organ, and though medication can keep them going for a time it only stalls the inevitable for a short while.

This can be observed in people who have a terminal illness. Where the inner organ and organ spirit should be there is often a dark hole.<sup>3</sup>

For example, I had been working occasionally on a magical priestess who had recurring cancer. She was thought to be in remission, but when I worked on her I found that a large area of her body showed no pattern, no vital force, and no organ spirits: the destruction preparation for death had begun. Even though she was thought to be in remission, she was dying. I sent her back to her doctor for tests, which showed that her cancer had indeed returned.

I managed to patch up the deepest part of the weave to give her a bit more time, and indeed she lasted another five years; but in those five years her system slowly started to shut down.

It is impossible to continually patch up the weave: not only can you not extend a life beyond its measure, but such work is also dangerous for the magician to attempt. It is a very strong drain on the magician's vital force, and if the magician has any debility or unseen illness it can trigger a destructive cascade within them. In the priestess's case, I simply helped her to last to the end of her measure.

---

### *Recognising the pattern*

---

The deep weave or pattern of the human life expresses itself in many different ways on a physical level. Because of this, the health of the vital force and life pattern can be observed by outer signs. These can show if there is a potential problem at a deep level. Such a disturbance in the pattern does not necessarily mean that total destruction is on its way, but it can indicate an underlying tear or weakness that needs attending to.

The pattern of a person's life force is mirrored in their genes. If a person begins to show signs of an altered or failing circadian rhythm,

---

<sup>3</sup>The same applies to any similarly affected aspect of the body's structure: the area in question will not show any patterns, inner body aspects, or vital force.

a damaged internal clock, or persistent depression for no outer reason,<sup>4</sup> then it is possible that the issue is a deep, underlying failure or a problem with their very life pattern. Such a failure in the pattern and rhythm can be caused by a variety of things, some very treatable; others not.

When as a magician you are presented with a case like this, or suffer from such an imbalance yourself, then once the usual treatable reasons have been discounted it is time to look at the deep life pattern itself. Often it can be patched and worked with to regenerate it, but if serious illness is also in the picture then often the break has gone too far.

Each case is very individual and knowing what can be fixed, what can be delayed, and what is inevitable comes only from experience. Because of this, in your practical work for this lesson you will learn how to check and work with your own pattern. It is advisable to check your pattern once a year to keep an eye on it.

Before we get to that, we need to look, from an inner magical perspective, at the point in time when the vital force's core is removed upon the point of death. This will help you understand the angelic and inner dynamics that often occur at the point of death.

Of course we are assuming that the person in question is dying from illness and not from an accident or being shot or stabbed and so forth. If the body is suddenly severely damaged then the inner process very different. The body cannot uphold life if its weave is destroyed, but equally the weave cannot sustain vital force within the body if the body is damaged beyond repair.

---

### *The angel and the orb*

---

I call this process *the angel and the orb* because that is exactly how it appears. You will work with this in vision in your practical work as an observer, but first let me give you some background.

This was something I observed repeatedly as a young magician when I attended to people in my family and friends who were dying. I did not see it every time: other times I would see other layers of process in

---

<sup>4</sup>PTSD, stress, hormonal fluctuations, and so forth.

action. Often you see only what you need to see, either to help the person or for your own learning. You cannot see all the different dynamics and layers in action at the same time: we simply cannot process that amount of information in one go. This is why we are often presented with aspects of a dynamic, not the whole show.

Most frequently I managed to observe this dynamic in action when a person was slowly dying and in their final stages, and sacred recitation was being spoken in the room for the dying person. I have observed the same process with Catholic, Islamic, and Jewish recitation being spoken: whether the recitation triggered the angelic presence itself or simply triggered me to see it, I don't know.

Generally the recitation would still the room, then at some point during the process an angelic being of fire would appear or step into the room and stand over the person who was dying. As soon as they were beside the person I would see the broken web in the dying person's body, and just above the umbilicus what appeared to be an orb of light in the centre of the web—the well of the vital force. The angel would watch the orb of light as its brightness dimmed, and once it got to a certain level of dullness, the angel would reach into the person and detach the orb from the pattern. The web would fall apart immediately and the angel would take the orb and vanish.

Every time I witnessed this, the person drew their last breath within a few minutes. A couple of times the last breath timed in exactly with the taking out of the orb. The body would appear dull, with no inner light at all. Once I had seen this a few times it did occur to me that such a web could be worked on to reconnect broken threads and plug the web back into the orb, which was the reservoir of life force for the person. Sometimes it was fairly easy to reweave; other times the threads would not reattach and would simply fall apart in my hands.

Sometimes when I would begin the reweaving process on someone who was badly injured or very sick, an angelic being would appear, place their arms through mine, and help me to reweave the life pattern back into shape.

You can do a lot of work with the body's different layers if the lifespan's measure is not at an end. If the illness or damage is from a hot spot of destruction, but the lifespan is still good, the person can often be put back together with a lot of work and time. But if the lifespan is as an end, nothing can be done. It is simply a matter of witnessing the taking of the orb and the cessation of life.



Often the type of angelic being that turns up to detach the orb one that is essentially the 'Bringer of Death.' They will not heal, help, or advise: their job is to remove the well of vital force, severing the connection between the person's inner and outer energies. This breaks the connection between the spirit and the body. The body will die and the spirit will release.

This process happens for everything that is a living being. It is also an octave of a principle that works in magical patterns. Once you learn the principles by working on your own body and also by observing the dynamic in action through vision, you can absorb what you have learned and apply the principles to working on fate, magical patterns, and other living beings.

---

*Task: Vision to tidy up your pattern*

---

The best way to learn about the pattern that holds the vital force is to work on your own. Do this in your work space so that contacts can flow over the threshold and work with you.

Light the lights in the directions and open the gates, but don't put out your tools. Greet the contacts on the thresholds and tell them what you are about to do. Then sit before the central altar facing south and still yourself.

Once you are still step out of your body and turn to look at it. Look in detail: see the light of the vital force throughout the body and take note if there are dull areas.

Look at the centre of your body, between your sternum and umbilicus, and focus on that area. When you are ready step into the centre of the body with the clear intention of working on the web pattern and the orb of vital force. Remember, intention opens up the layers for you to work with.

See with your inner vision the body as a web of energy, and check all the strands of the web. Ensure that the strands round the orb of vital force are all connected into the orb. If any are broken or frayed, reconnect them. If you need tools, reach upwards for them with a clear idea in your mind of what you need. Think about what you would use to fix wires or threads: crochet needles, electrical tape, copper wires, sewing

thread...use what you know about so the assisting beings will realise what they need to hand you.

You are unlikely to see the beings working with you. In such work all that tends to appear is a hand with a tool coming down from above.<sup>5</sup> Depending on how your imagination works, you could also work like a spider: see threads coming from your hands as you weave.

What triggers the right energy and form for you to work with is being clear with yourself about what you are doing. If you are clear, the beings and contacts that will help will also be clear about what you are trying to achieve.

Work your way through your body, checking all the channels of vital force that appear as these threads of power, and check that all threads eventually track back to the central orb of vital force. Once everything is fixed, the whole pattern should glow with vital force and the orb should be strong and bright.

If the orb is still dull once all the threads are connected, there is likely an issue with your vital force. To regenerate that, reach upwards with the intention of filling up your vital force and see an energy line<sup>6</sup> coming down from the stars. Plug it into the orb until it fills with light and shines brightly. Once it is full and the web is clear and bright, hand the tools back and step out of the body.

Look at the body again closely to ensure everything is more or less okay. Once you are sure all is well, step back into the body and meditate in stillness for a short while.

When you are ready get up, bow to the contacts in the directions, and close down the room. If you can, go and have a nap or lie down quietly for an hour or so. In all work of this type, never dash straight back into the family/life/work; always have a little time to decompress and *let the work embed itself in your body and mind.*

This is really important, as the process carries on for a while after you have finished: the body needs to process the energy and organise itself. If you rush straight back into work or onto the internet/phone you can short circuit the inner process from completing itself: it needs to 'cook.'

If you spotted problems with your web, then a number of things

---

<sup>5</sup>Work for the future.

<sup>6</sup>I see a gasoline pump.

could have caused that: a prolonged bad diet with few fresh foods, an unhealthy living situation, inner impact, clingers, long-term parasites, ill health, and so forth. Just fixing the web without finding out the cause of any problems and remedying it will bring about a return of the damage.

It is up to you to find out the cause and take whatever action is possible. If it is from an old injury or illness that has now passed<sup>7</sup> then a web repair should be enough—but you will need to keep an eye on it by doing three-monthly checks. You can use divination to help pinpoint the cause, along with a good dose of reality checks and common sense.

Also, the web can degrade with age, which must also be taken into consideration. It can be fixed periodically if the cause is simply ageing, but it is also important to live as healthily as you can.

---

*Task: Vision to observe an orb's removal*

---

This vision puts you in a situation where a person is on the point of death and their orb of vital force is being removed. When the magician does this vision they will be sent to wherever there is someone at the point of death and recitation is being used. So each of you who works with this vision will be sent to different places and experience different scenarios. The time could be past, present, or future: you will go wherever it is best for you to observe and learn.

This is also a step that takes you a bit further in the methods of visionary work: you are not all going to one set place that is well-trodden and known by other magicians; rather you are learning to hear a call and answer it. You have done this once before in a simple way; now you will take it a step further and expand your technique.

Set up your room, put out the tools, open the gates, greet the contacts, and then sit in the direction which most pulls you. Sit facing the altar and close your eyes.

Meditate into stillness and feel yourself in the Void, in the 'nothing.' As you sit quietly you will hear a call or a voice reciting something: it is a sacred recitation of some kind to which you are instinctively drawn. Fix all your attention on the recitation and follow it.

---

<sup>7</sup>A bad long-term infection, cancer, etc.

You will find yourself stepping out of the Void and into a room or space. There will be a person on the point of death, and someone in the room or nearby will be reciting a sacred text which you may or may not recognise.

Look at the dying person. See their web and look closely: observe what the damage is and look at the state of their orb: it may be dull, dark, or still bright. Whatever the orb's state, you were drawn there because this is a point of death.

As you listen to the recitation a wall of fire appears, and out of it steps an angelic being. Its presentation will largely depend on the type of recitation: they will dress for the religious pattern being used. If the angel sees you and acknowledges you, bow to them and keep at a safe distance where you can observe but not interfere.

Watch what the angel does, how it acts, whether or not it talks to the dying person, and whether it touches them or interacts in any way with their web pattern. At some point the angel will reach into the person and lift the orb out of their web: the web will break up and fall apart straight away.

The angel may leave at this point or stay and observe; or it may help the dead person. Watch closely. Once the web and orb have been broken up the body will breathe its last breath. This breath can be observed energetically, so watch closely. It is at that point that you may be able to see the actual eternal spirit of the person. They may stay in the dead body for a while, or they may lift themselves out: death is unique to each person, so you will have to simply watch and learn. But remember that each death is very different and each spirit handles it in their own way.

Now cast your attention to the person doing the reciting. Look at the words and how the recitation affects the space round the person, how it forms in the air and what it does.

You will notice that it changes the energy of the space around the living and the dead and creates its own energy pattern: this is to stop the dead person immediately clinging to the nearest living person. The space prevents such an action, and also creates a pathway that the dead person can begin to walk as they let go of life.

Sometimes the dead person will cling to their body for days<sup>8</sup> and sometimes they will leave immediately. Just watch and learn. When

---

<sup>8</sup>In our time.

the recitation stops you must leave, as it is no longer safe for you to be there as an observer: the recitation offers you protection. Sometimes the recitation lasts only an hour and sometimes it can go on for days, depending on the culture.

When it is time for you to leave, remember the wall of fire that the angel stepped through. Go and stand before it. You will see straight away that it is a threshold: step through it and you will find yourself in the Inner Library. Either go back to your work space from here, or spend some time in the Library touching books connected with what you have just witnessed. Whatever happens in the Library will be connected to your learning on this subject, so take your time. When you are ready step back into your work space.

Before you get up to close the directions down, think about what you just witnessed and make sure you remember all the details. Once the room is closed down, write it in your journal and type up a summary on computer.

---

### *Task: Exteriorising the learning*

---

All inner experience is exteriorised in the physical world.<sup>9</sup> Trying to understand the process of the web and the vital force can be difficult intellectually, so the best way to really embed the knowledge in you deeply is to work with a weaving action in the physical world.

You can do this very simply by drawing, weaving, braiding, knitting—or even working with electric circuit boards. Do some practical work on creating patterns that all come to a central point: as you work the pattern, think about what you now know and have seen, and create the pattern as if you were creating a circuit for vital force to flow through. You have worked with creating patterns before, and this exercise should take you a step further in your understanding.

By doing this simple outer action you will begin to understand weaknesses in patterns and what strengthens them, what is a good pattern and what is a weak pattern. How many connections to the orb should a pattern make: is more better than less, or is it the other way round?

---

<sup>9</sup>This is why magic has ritual—it externalises the power.

When you do this task, don't let your conscious mind get in the way: just do it and ponder as you work. The act of a magician weaving or constructing a pattern/circuit will trigger the deeper understanding and brings the outer and inner skills together.

---

*Task: Observing patterns in nature*

---

Look at magnified images of crystal patterns, snowflakes, sand, sugar, salt; look at stem cells, any type of cells, neurons; and look at a map of the central nervous system. What you will see is patterns, lots of patterns. Nature is very efficient in that she reuses the same idea over and over in different forms. Look at images of the solar system, of galaxies: look throughout nature at her patterns. The inner world and the outer world are not very different in many respects, and the same unique patterns of life force, energy, and structure appear in everything, both inner and outer.

Here is an example picture of endothelial cells under the microscope: look how similar it appears to the inner web. Everything is a mirror of everything else: once you learn to work with one type of living web, you can apply the same skill to everything else with a living web.

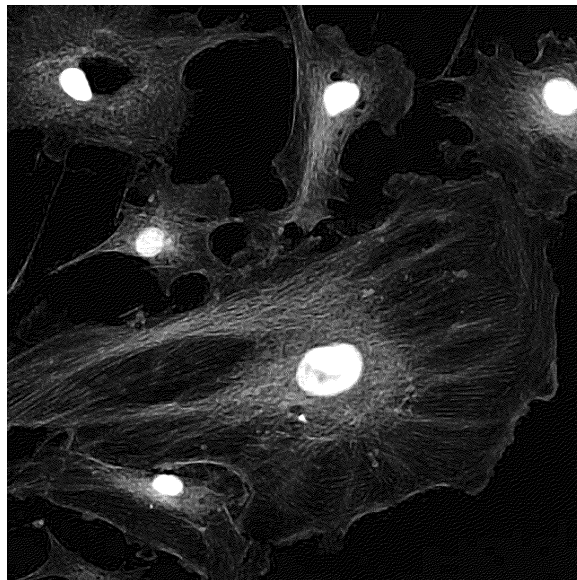


Figure 1: Endothelial cells under the microscope with fluoro staining. (Public domain.)

## *Task: Construct a ritual pattern*

---

This task teaches you to connect the patterns inherent in nature to ritual action. You are not going to construct a working ritual; rather you are going to construct a couple of *layers*.<sup>10</sup>

Look and find recitations that are used in death, regardless of the religion. And look at more than one: find ones that have reference to powers, beings, or directions. The Tibetan and Egyptian texts are the richest sources for this, but also look at Hindu, other Buddhist, Catholic, Islamic, and Jewish ones: see what you can find, then settle on one.

Extract the pertinent information<sup>11</sup> and map out on paper what directions you think those powers would belong in. The central flame is the orb and the starting and finishing points of the ritual. Don't bother with any words at this point; you are simply focusing on the pattern itself.

Map ritual movement between the directions and cross-quarters, above and below. Figure out how the ritual would move around the space to connect or disconnect energies, and between encounters with different beings. The movements between the directions and quarters, and between the different beings, will create a pattern of movement: draw this pattern out on paper and map it.

Then simply walk the pattern around the work space without opening anything or calling in anything: see if it works as a mobile pattern that you can walk.

The pattern should have connections between various beings, the carrying of energy from one place to another, and connect to, or disconnect, the central orb. Now build in which light is lit when, what light is put out when, and which beings would be on which threshold. Remember that the purpose is the disconnection of the orb and the composting of the pattern of life.

Learning to do this without putting in any recitation is a good way to learn the underlying dynamics of power: too much emphasis is usually placed on words and tools in magic, often to the detriment of the actual

---

<sup>10</sup>Learning to walk before you can run.

<sup>11</sup>Powers, directions, Divinity, deities, spirits, demonic beings, landscapes, etc.

pattern of energy involved. Of course a working ritual would have words and tools, but learning to work with the pattern first in this way teaches you what it is that upholds, works with, and powers up with the use of words and tools.

Write up the ritual steps and draw out the final pattern. Keep it on computer: it will be submitted to your mentor if you are being mentored.

---

## *Summary*

---

The physical and energetic patterns in life are important layers to work with as magicians. You will also see, through your understanding of your fate web, that such patterns trigger events. In fate they appear as chance meetings, certain destinations, names, etc. These things can often appear on the surface as inconsequential or random.

The same happens with physical and energetic patterns: they trigger events in the physical or energetic life of a being, and also dictate how that substance or being will interact with other patterns. Each layer of nature's patterns of life, substance, and fate, are like locks and keys: they either fit or they don't. When they fit, they trigger something.

When the vital force is removed from a pattern, either a magical pattern, a vital force pattern, a fate pattern, etc., whatever that pattern is will fall apart and be destroyed/composted. This is a really important dynamic to understand in magic as it runs through everything, and this understanding can mean the difference between success and failure in magic.



QUAREIA

---

## COPYRIGHT

© Josephine McCarthy 2015

All rights reserved. No part of this publication may be reproduced, distributed, or transmitted in any form or by any means, including photocopying, recording, or other electronic or mechanical methods, without the prior written permission of the publisher.